



**REGIONAL SPECIALISED METEOROLOGICAL CENTRE-TROPICAL CYCLONES, NEW DELHI  
SPECIAL TROPICAL WEATHER OUTLOOK**

**DEMS-RSMC TROPICAL CYCLONES NEW DELHI DATED 15.07.2025**

**SPECIAL TROPICAL WEATHER OUTLOOK FOR NORTH INDIAN OCEAN (THE BAY OF BENGAL AND THE ARABIAN SEA) VALID FOR NEXT 168 HOURS ISSUED AT 1530 UTC OF 15.07.2025 BASED ON 1200 UTC OF 15.07.2025.**

**SUB: (A) WELL MARKED LOW PRESSURE AREA OVER NORTH JHARKHAND AND ADJOINING SOUTH BIHAR  
(B) DEPRESSION OVER NORTHWEST RAJASTHAN**

**(A) WELL MARKED LOW PRESSURE AREA OVER NORTH JHARKHAND AND ADJOINING SOUTH BIHAR**

THE WELL MARKED LOW PRESSURE AREA OVER NORTH JHARKHAND AND ADJOINING SOUTH BIHAR PERSISTED OVER THE SAME REGION AT 1200 UTC OF TODAY, THE 15<sup>TH</sup> JULY 2025.

IT IS LIKELY TO MOVE FURTHER WEST-NORTHWESTWARDS ACROSS SOUTH BIHAR TOWARDS EAST UTTAR PRADESH DURING NEXT 24 HOURS. HOWEVER, THE SYSTEM IS UNDER CONTINUOUS MONITORING FOR POSSIBLE RE-INTENSIFICATION.

AS PER INSAT 3DS IMAGERY, AT 1200 UTC OF 15<sup>TH</sup> JULY 2025 BROKEN LOW/MEDIUM CLOUDS WITH EMBEDDED INTENSE TO VERY INTENSE CONVECTION OVER SOUTHEAST UTTAR PRADESH EAST MADHYA PRADESH BIHAR JHARKHAND CHHATTISGARH ODISHA GANGETIC WEST BENGAL SUB HIMALAYAN WEST BENGAL & WEST BANGLADESH (MINIMUM CTT MINUS 70-90 DEG CEL)

**(B) DEPRESSION OVER NORTHWEST RAJASTHAN**

THE DEPRESSION OVER CENTRAL PARTS OF NORTH RAJASTHAN MOVED NORTHWESTWARDS WITH A SPEED OF 30 KMPH DURING PAST SIX HOURS AND LAY CENTERED AT 1200 UTC OF TODAY, THE 15<sup>TH</sup> JULY, 2025 OVER NORTHWEST RAJASTHAN NEAR LATITUDE 29.0°N AND LONGITUDE 73.7°E ABOUT 60 KM EAST-SOUTHEAST OF ANUPGARH (42122), 100 KM SOUTH OF GANGANAGAR (42123) AND 120 KM NORTH-NORTHEAST OF BIKANER (42165).

IT IS LIKELY TO CONTINUE TO MOVE NORTHWESTWARDS ACROSS NORTHWEST RAJASTHAN AND WEAKEN INTO A WELL MARKED LOW PRESSURE AREA DURING NEXT 12 HOURS.

AS PER INSAT 3DR IMAGERY, AT 1200 UTC OF 15<sup>TH</sup> JULY 2025 SCATTERED TO BROKEN LOW/MEDIUM CLOUDS WITH EMBEDDED INTENSE TO VERY INTENSE CONVECTION OVER

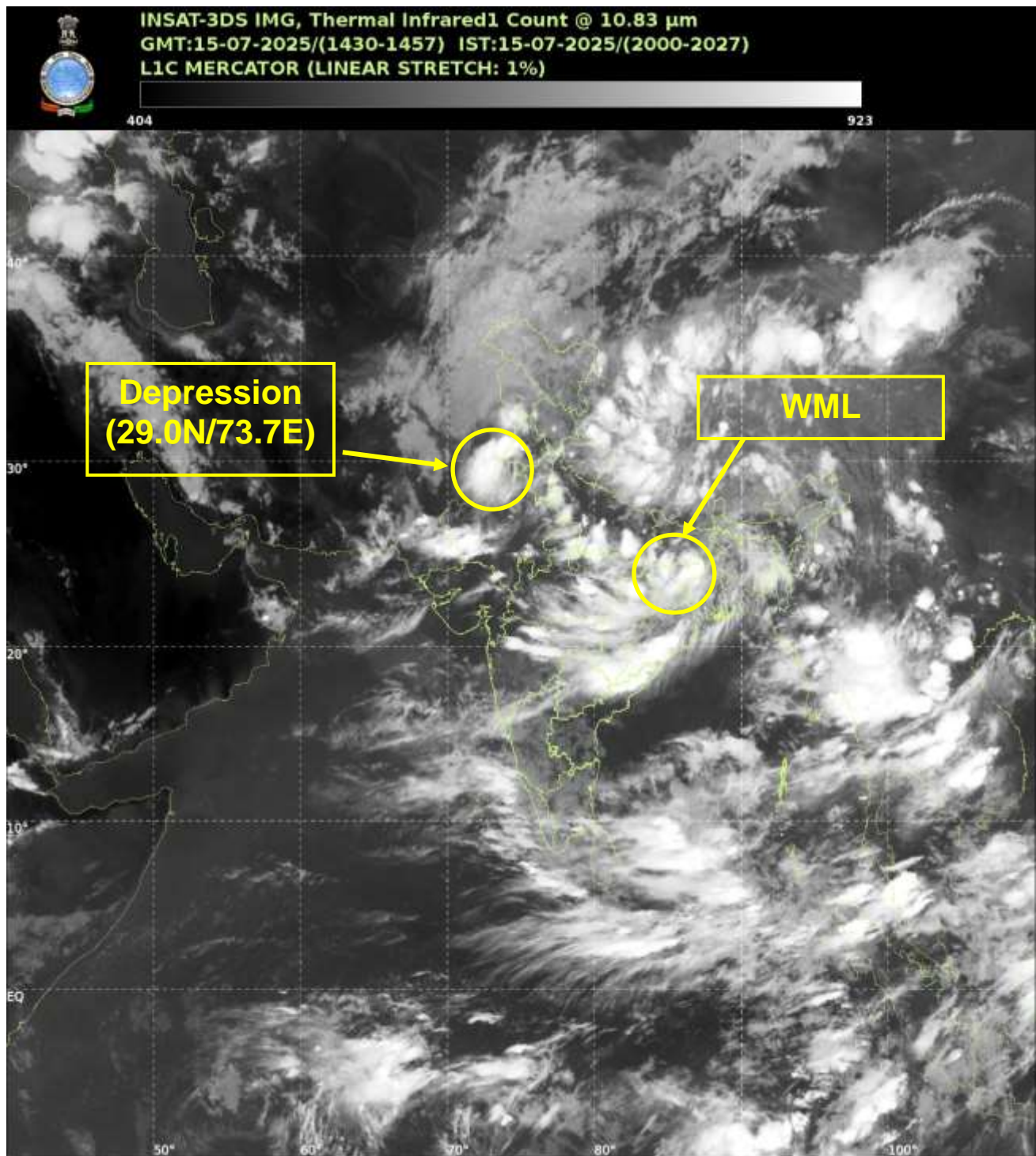
NORTH RAJASTHAN ADJOINING HARYANA SOUTHWEST PUNJAB (MINIMUM CLOUD TOP TEMPERATURE IS 60-80 °C)

**WARNINGS:**

**WIND WARNING:**

- SQUALLY WIND SPEED REACHING 35-45 KMPH GUSTING TO 55 KMPH IS LIKELY TO PREVAIL OVER NORTH RAJASTHAN AND ADJOINING HARYANA & PUNJAB FOR NEXT 12 HOURS, AND DECREASE THEREAFTER.
- SQUALLY WIND SPEED REACHING 30-40 KMPH GUSTING TO 50 KMPH IS LIKELY OVER BIHAR, JHARKHAND, NORTH CHHATTISGARH, AND ADJOINING EAST UTTAR PRADESH DURING NEXT 24 HOURS

**(D R PATTANAİK)**  
HEAD RSMC, NEW DELHI



WML – Well Marked Low Pressure Area

Cloud distribution: (a) Isolated: <25%, Scattered:25-50%, Broken: 51-75%, Solid:>75%, Convection Intensity: (a) Weak: Cloud Top Temperature (CTT) >-25°C, (b) Moderate: CTT: - 25°C to -40°C, (c) Intense: CTT: - 41°C to -70°C and (d) Very Intense: : Less than -70°C  
PROBABILITY OF CYCLOGENESIS (FORMATION OF DEPRESSION):NIL: 0%, LOW: 1-33%, , MODERATE: 34-66% AND HIGH: 67-100%  
This is a guidance Bulletin for WMO/ESCAP Panel Member countries. Visit respective National websites for Country specific Bulletins



## OBSERVED AND FORECAST TRACK OF DEPRESSION OVER NORTHWEST RAJASTHAN AT 1200 UTC (1730 HRS. IST) OF 15<sup>th</sup> JULY 2025



DATE/TIME IN UTC  
IST=UTC + 0530  
L: LOW PRESSURE AREA  
WML: WELL MARKED LOW PRESSURE AREA  
D: DEPRESSION (17-27 KT)  
DD: DEEP DEPRESSION (28-33 KT)  
CS: CYCLONIC STORM (34-47 KT)  
SCS: SEVERE CYCLONIC STORM (48-63KT)  
VSCS: VERY SEVERE CYCLONIC STORM (64-89 KT)  
ESCS: EXTREMELY SEVERE CYCLONIC STORM (90-119 KT)  
SuCS: SUPER CYCLONIC STORM (≥ 120 KT)

1KT=1.85 KMPH

● LESS THAN 34 KT  
⬮ 34-47 KT  
⬮ ≥ 48 KT  
— OBSERVED TRACK  
— FORECAST TRACK  
▲ CONE OF UNCERTAINTY

## Fishermen Warning Graphics

